



Connecting to Christ's Body

?

WHEN HAS
BEING PART
OF A TEAM
REALLY
HELPED YOU
SUCCEED?

The
POINT ➤

Spiritual growth requires that we live
in community with other believers.

➤ 1 CORINTHIANS 12:12-24

¹²For just as the body is one and has many parts, and all the parts of that body, though many, are one body—so also is Christ. ¹³For we were all baptized by one Spirit into one body—whether Jews or Greeks, whether slaves or free—and we were all given one Spirit to drink.

¹⁴Indeed, the body is not one part but many. ¹⁵If the foot should say, “Because I’m not a hand, I don’t belong to the body,” it is not for that reason any less a part of the body. ¹⁶And if the ear should say, “Because I’m not an eye, I don’t belong to the body,” it is not for that reason any less a part of the body. ¹⁷If the whole body were an eye, where would the hearing be? If the whole body were an ear, where would the sense of smell be? ¹⁸But as it is, God has arranged each one of the parts in the body just as he wanted. ¹⁹And if they were all the same

part, where would the body be? ²⁰As it is, there are many parts, but one body. ²¹The eye cannot say to the hand, “I don’t need you!” Or again, the head can’t say to the feet, “I don’t need you!” ²²On the contrary, those parts of the body that are weaker are indispensable.

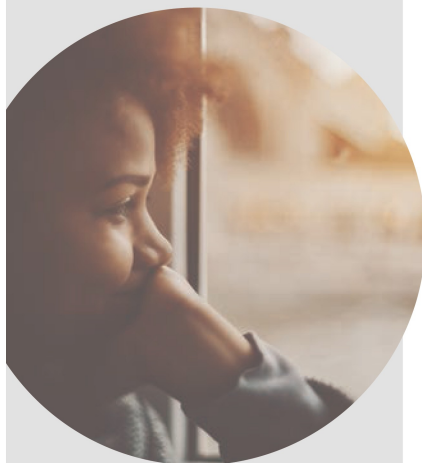
²³And those parts of the body that we consider less honorable, we clothe these with greater honor, and our unrespectable parts are treated with greater respect, ²⁴which our respectable parts do not need. Instead, God has put the body together, giving greater honor to the less honorable,



THE BIBLE MEETS LIFE

FACT:

If you're thinking of going to space, understand that you'll have to go without bread. Crumbs have been known to float into astronauts' eyes and interfere with equipment, so bread has been banned from space.²



LEVELS OF BIBLICAL LEARNING // CHURCH

The church is called to train and equip its members for works of ministry, including giving their time, resources, and talents to serve those within the church and reach those outside the church.

In April 1970, Apollo 13 was headed to the moon when disaster struck. An oxygen tank exploded forcing NASA to abort the mission. To save power they would need later for re-entry, the astronauts moved from the Service Module to the Lunar Module. This created a new problem. The Lunar Module was designed for two people, and there was not enough air for three men to last the trip home. The buildup of carbon dioxide threatened their lives. They would need to replace the CO² Scrubbers to clean the air, but the only spare ones were built for the Service Module and didn't fit the Lunar Module.

On the ground, NASA's Crew Systems Division put together an improvised scrubber using random parts they knew the astronauts had on board. The instructions were transmitted, and the astronauts assembled the makeshift scrubber. It worked and three lives were saved. But no one person can take credit for this. It took a collection of engineers and technicians working together to come up with the solution.¹

Our spiritual growth is the same. We need the support and input from others, and they need ours.

1 CORINTHIANS 12:12-13

1 Why is unity in the church so important?

2 What causes disunity in the church?

1 CORINTHIANS 12:14-18

3 In what ways is the church like a human body?

4 When are you tempted to compare yourself to others in the church?

5 How can you personally benefit the church?



*In a healthy church, members not only work together, but they value, appreciate, and depend on those who are different.
#BSFLSpiritualDisciplines*

1 CORINTHIANS 12:19-24

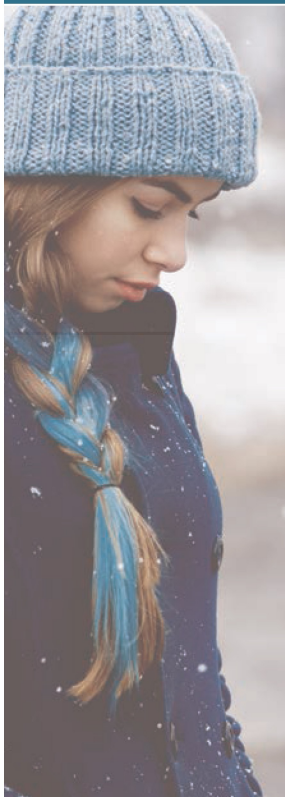
6 Why can being self-focused harm the church?

7 What does a healthy church body look like?

8 What can you do to be more involved in the work of the church?



LIVE IT OUT



GOD

JESUS

HOLY SPIRIT

BIBLE

SALVATION

CREATION

CHURCH

PEOPLE

FAMILY

COMMUNITY
& WORLD

LEVELS OF BIBLICAL LEARNING // CHURCH

The church is called to train and equip its members for works of ministry, including giving their time, resources, and talents to serve those within the church and reach those outside the church.

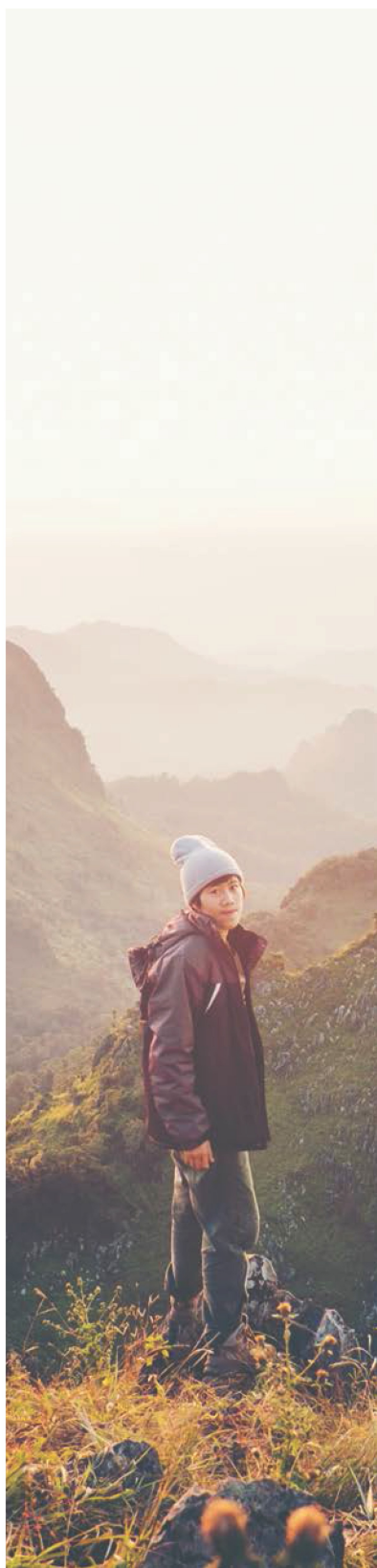
God gives each person who comes to faith in Jesus a spiritual gift that is to be used for serving the church (1 Cor. 12:7). These gifts are applied and cultivated within the context of Christian community. As we spend time with one another—teachers helping others understand God’s Word, encouragers building others up in their faith, the merciful offering comfort and compassion to the suffering, and many more—the church is knit together in close fellowship, and God is glorified both within and among those outside the church.

> CHRIST

Community and communion are derived from the same root word—common. The things we have in common with others in our church family are actually those things we all have in common with Jesus. Through Holy Communion, we are called to remember the sacrifice of Jesus, His body broken and His blood shared for the forgiveness of sins, and to commit ourselves to living in light of His sacrifice.

9 How does your life share things in common with the life of Jesus?

10 How will you commit to living in ways that reflect the sacrifice of Jesus?



> COMMUNITY

We are called to live in unity with other believers in the church. Because the church is made up of imperfect people who don't always see eye to eye, there will be times when we struggle to get along with others in our church family. People will hurt us, and we will hurt them. Still, this doesn't change that we are called to live in close relationship with other believers.

11 Is there someone in the church you are upset with? Is there someone who is upset with you?

12 Make it a point to connect with this person and work it out. Where you are wrong, humbly confess the ways you've hurt them. It may be wise to ask a leader to help you work through this.

> CULTURE

We are called to be in the world, but not of the world (John 15:19; 1 John 2:15). We aren't to love the world and its values, but we are to love the people of the world. After all, we're all familiar with John 3:16.

13 Who is a non-believer with whom you have a good relationship? How can you work to build this relationship in order to point them to Jesus?